

PEN—International Japan

NTUT Report, 2008



Photo: Tsukuba Festival 2009

*Naoki Ohnuma
Yoshinori Murakami
Tsutomu Araki*



National University Corporation

Tsukuba University of Technology



- PEN-Japan

President: Dr. OHNUMA

- PEPNet-Japan

Director: Dr. MURAKAMI

President of NTUT

Professor ARAKI

Research Assistant HASUIKE

New President of NTUT

Dr. Murakami Yoshinori

**President of National University Corporation
Tsukuba University of Technology, Japan**

Professor, Mechanical Engineering

Dr. Murakami holds a Dr. Eng. He started his career as a Research Associate at Osaka University. In 1990, he moved to Tsukuba College of Technology as an Associate Professor. In 2004, Dr. Murakami was appointed dean of Programs for Deaf Students at Tsukuba College of Technology and he was also appointed the first dean of Programs for the Deaf Students at Tsukuba University of Technology which was elevated to four-year programs in 2005. Dr. Murakami had served as Vice President for 2 years since 2007. In April of 2009, Dr. Murakami was elected President of N-TUT. Dr. Murakami's expertise is Mechanical Engineering and he has written many papers and published many books in the field of Fluid Machinery and Machine Design.



President Yoshinori MURAKAMI

Korea National College of Rehabilitation and Welfare--June '08, 9-11& 16-18 Visits



Memorial photograph—1st Group

Special Education College of Beijing Union University Mar. 9-13, '08 Visit



Visiting the CAD/CAM Room

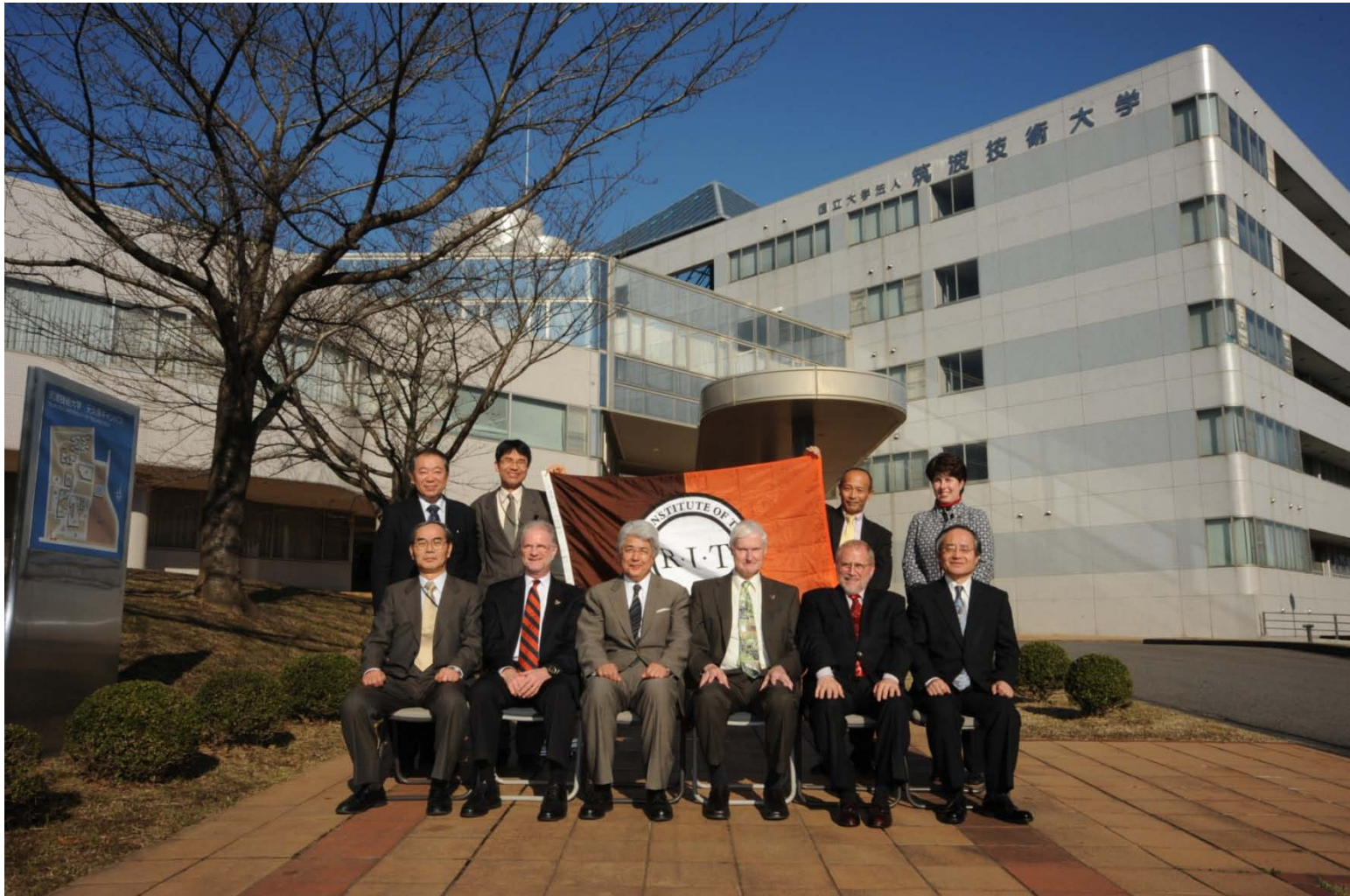
9th International Symposium '08, Nov. 13-14



**Invited Symposium presenters from China
with NTUT representatives**

Memorial photograph

RIT Visit '08, Dec.10



RIT President Destler in front of NTUT

Recent Signings of Cooperation Agreements



NTUT-KEPAD Korea Employment Promotion Agency for the Disabled
June 8, 2009
(Korea News IS photo)



NTUT-BMSTU Bauman Moscow State Technical University
Sept 19, 2008



NTUT-Zhongzhou University
Aug 25, 2008

Paper Car Race '08, Dec.13



Educational Exchange through Video Conferencing with Special Education College of Changchun University

Tsukuba Science Festival 2008, Sep. 8-9



Video Conferencing with Special Education College of Changchun University

Educational Exchange



**NTUT-Korea Nazarene University
Student Workshop
March 23-24, 2009**



**NTUT-Korea *National College of
Rehabilitation and Welfare*
Korea/Japan Distance Learning
February 17, 2009**



PEN—International Japan

- In this Reporting Year Japan did not receive PEN-International financial assistance. The exception is the assistance for attending this meeting.
- We are very grateful to PEN for organizing and supporting activities in which we could participate. This has given us the opportunity to broaden our international relationships and to become involved in deep substantive cultural and educational exchanges. Examples are what we have reported on today.
- As one of the founding members of PEN-International, our university is looking forward to continuous cooperation with the other participating PEN institutions.



Prospects of Higher Education for the Deaf in Japan

PEN-Japan

President Dr. OHNUMA



100 Schools for the Deaf in Japan

- 98 public schools for the deaf :
Auditory Oral approach and Sign language approach can be matched to the needs of the child
- 2 private schools for the deaf:
One private school adheres to the Auditory Oral approach.
The other one adheres to the JSL (Japanese Sign Language) approach.



Post- secondary education for hearing impaired students

- Schools for the deaf have 2 years vocational advanced courses.
- 750 four-year-course universities and 400 two-year-course colleges.
- Most of them have been actively accepting handicapped students and showing efforts in improving the educational environment for the hearing impaired.



The entrant ratio

- The percentage of hearing students who enters universities is over 50%,
- but among the hearing impaired, it is 25~30% in Japan.
- There are about 1000 hearing impaired students (18-year old, severe-to-profound hearing loss) each year.
- Only 50, among 1000, pass to come to N-TUT, and **more than 200** are accepted in other universities all over Japan.



New Issues at the Universities accepting hearing impaired students

- ◆ Hearing-impaired students now ask the universities to provide barrier-free access to information and ensure a high level of professional education.
- ◆ **Moreover, hearing-impaired students are now asking for support for employment and career development after graduation so as to utilize their abilities acquired in universities.**

Sister Institutions

- **Tianjin University of Technology, China**
- **Changchun University, China**
- **Beijing Union University, China**
- **Zhonghou University, China**
- **National College of Rehabilitation and Welfare, Korea**
- **Nazarene University, Korea**
- **National Institute for Special Education, Korea**
- **Bauman Moscow State Technical University, Russia**
- **National Technical Institute for the Deaf, USA**
- **Gallaudet University, USA**

“Special Education in Asia”

- We have been holding an International symposium annually at N-TUT.
- “Special Education in Asia” has been the core theme for the last few years.

Enrolment of Foreign Students

- The environment is ripening for us to consider taking in hearing impaired students from overseas
- We are going to prepare a training program for not only the Japanese language, but also skills of sign language, for overseas hearing impaired students.



- I have a very important announcement to make about our higher education in Japan.



“300,000 Foreign Students Plan”

- Funding has recently been approved by the Ministry of Education for a new program to invite 300,000 foreign students to Japanese universities within the next 10 years.
- A total of \$37,000,000 has been budgeted for this project.



- The Japanese government has the dream of an action plan to cultivate talented Nobel Prize level students from overseas.



- There are presently more than 700 universities in Japan.
- This year 20 institutions have been chosen to participate in the “300,000 Foreign Students Plan”.



- Up to this time, there has been little consideration for including disabled students in this project, despite the suggestions of the Tsukuba University of Technology.



- The Ministry has offered to consider our proposals if we can come up with a good concrete plan.



- It is acknowledged that even non-disabled students from abroad will require assistance to adapt to the Japanese cultural and educational environment.



- It is understood that hearing-impaired students will require even more support to adequately understand the lectures and participate academic life.



- The best ways to conduct this support is currently under discussion.
- So we will require a “Special Support Center for the hearing impaired student from abroad”.



- As our institution should serve as a model we are considering various paths.
- At present, we are considering having translations from spoken Japanese and Japanese Sign Language into the languages of specific countries, e.g., Thai, Korean, Chinese.



- Or, perhaps it would be better to use English and ASL as the link languages?
- We very much welcome your opinions and suggestions on this.

- We are considering support for not only academic and vocational skills but also for needed social adaptation skills for Japanese society.
- The planned “Special Support Center for the hearing impaired student from abroad” is expected to fill this role.



- Post graduate courses are planned to be established at N-TUT next April.
- The Japanese one and only post graduate school for hearing impaired people, among 86 national universities.
- The handicapped people themselves can pursue “studies on disabilities” and acquire master and doctoral degree in this field.



- As NTUT has established a very good reputation in Japanese society over the past 20 years, mainly because of the societal accomplishments of our graduates, we have continued to prosper.

- As a national institution we have a responsibility to the Japanese taxpayer to turn out graduates who are not only economically independent but who will contribute to society, making good use of their skills gained from our university.



- On average, our university receives about 5 times the financial assistance from the national government compared to other national universities.
- So our responsibility is very heavy.
- We are looked upon as a model for the rest of the nation.



- Needless to say, mainstreaming of hearing-impaired students is the goal, but an institution like NTUT is an aid, may I say a necessary step, to that goal.



- Deaf and hard-of-hearing people often have abilities which can only be displayed if they have had the proper environment in which those capabilities could be developed.



国立大学法人

筑波技術大学

The Achievements of Postsecondary Education Programs Network of Japan

Michiko Hasuike

PEPNet-Japan
T-TAC



National University Corporation

Tsukuba University of Technology

Establishment of PEPNet-Japan and T-TAC

PEPNet-Japan

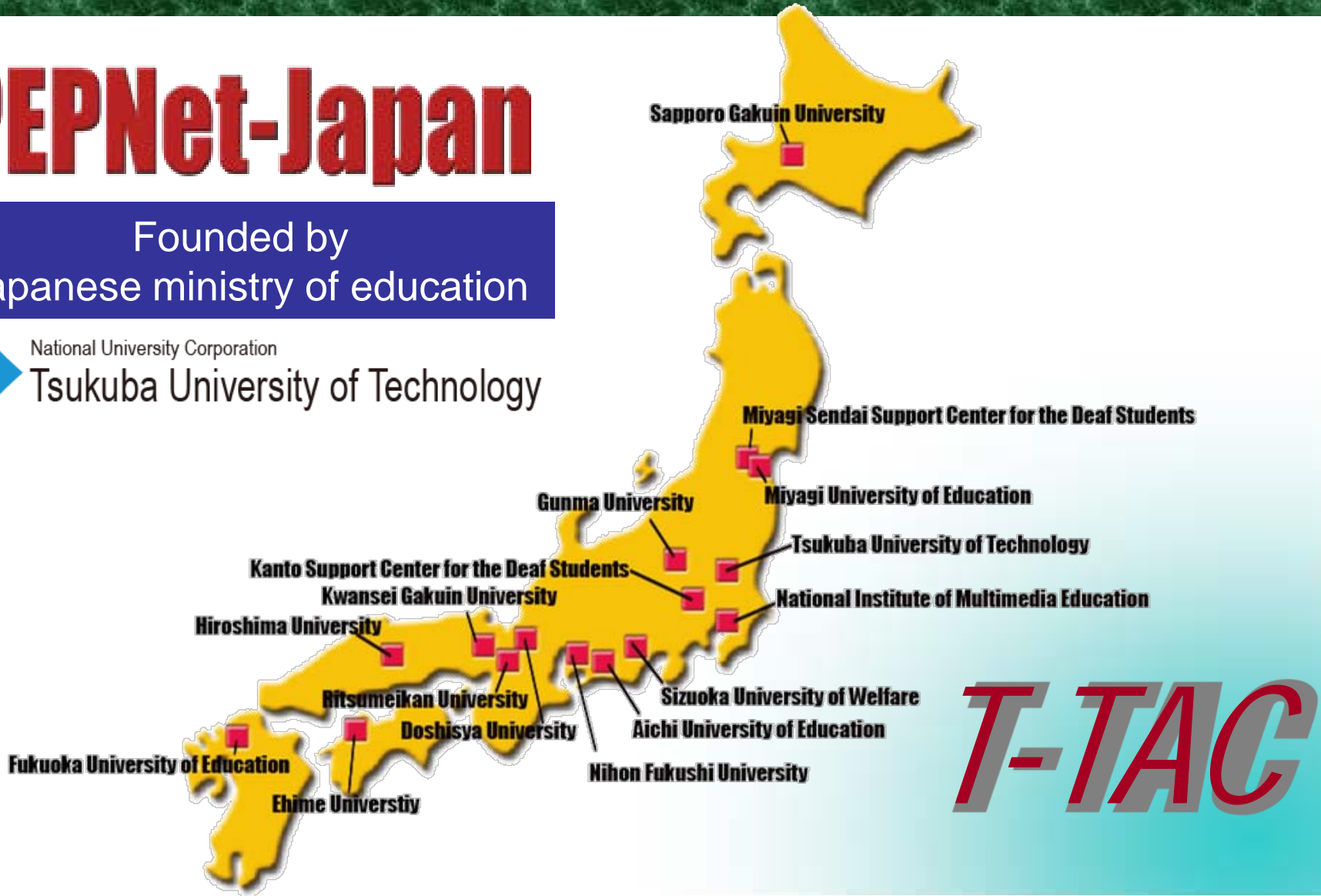


Establishment of PEPNet-Japan and T-TAC

PEPNet-Japan

Founded by
Japanese ministry of education

National University Corporation
Tsukuba University of Technology



T-TAC

NTUT Outreach program

T-TAC

- *Technical Assistance*
- *communication support*
- *Material Development*
- *Staff and Faculty Training*
- *Research*
- *Network Development*



PEPNet-Japan

NTUT Outreach program

T-TAC

- ***Technical Assistance***
- *communication support*
- *Material Development*
- *Staff and Faculty Training*
- *Research*
- *Network Development*



Assisted Institutions

- 筑波大学
- 富山大学
- 山口大学
- 福島大学
- 法政大学
- 京都大学
- 東京大学
- 広島大学
- 大阪国際大学
- 香川大学
- 早稲田大学
- 東海大学
- 立命館大学
- 沖縄大学
- 静岡福祉大学
- 東北福祉大学
- 広島文教女子大学
- 愛知淑徳大学
- 関東学院大学
- 帝京科学大学
- 豊橋創造大学
- 北翔大学
- 東京学芸大学
- 大阪芸術大学
- 近畿福祉大学
- 明治学院大学
- 大東文化大学
- 沖縄国際大学
- 桃山学院大学
- 茨城キリスト教大学
- フェリス女学院大学
- 関西学院大学
- 北海道薬科大学
- カリフォルニア大学東京スタディ・センター
- 国際基督教大学
- 大阪市立聾学校
- 鳥取聾学校
- 熊本聾学校
- 福岡高等聾学校
- 東京都立中央ろう学校
- 筑波大学付属聴覚特別支援学校
- 山口新聞
- 横浜市予備校
- サイマルインターナショナル
- 日本ASL協会
- 長野サマライズセンター
- 東京都手話通訳者協会
- 東海聴覚障害学生高等教育を考える会
- 日本学生支援機構
- メディア教育開発センター

NTUT Outreach program

T-TAC

- *Technical Assistance*
- ***communication support***
- *Material Development*
- *Staff and Faculty Training*
- *Research*
- *Network Development*



Video Remote Interpreting



Training workshop (1 time/ month)
On campus training (1 times/ week)

Communication Support (Assisted Listening Device)



Fitting Hearing Aid · Rent Equipments for Trial

NTUT Outreach program

T-TAC

- *Technical Assistance*
- *communication support*
- ***Material Development***
- *Staff and Faculty Training*
- *Research*
- *Network Development*

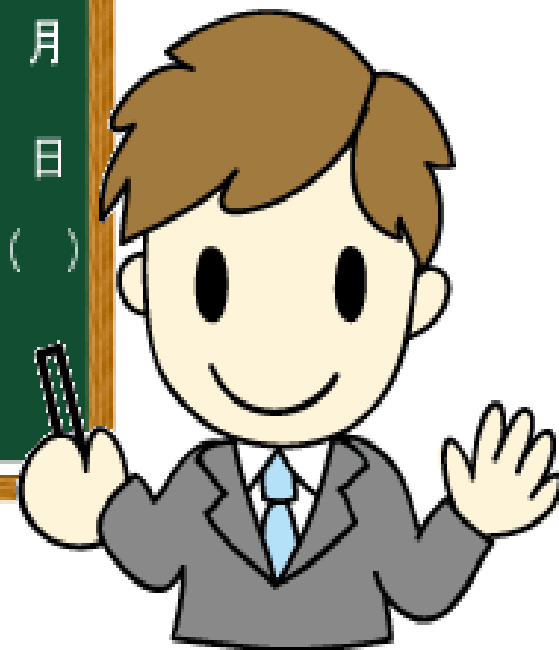
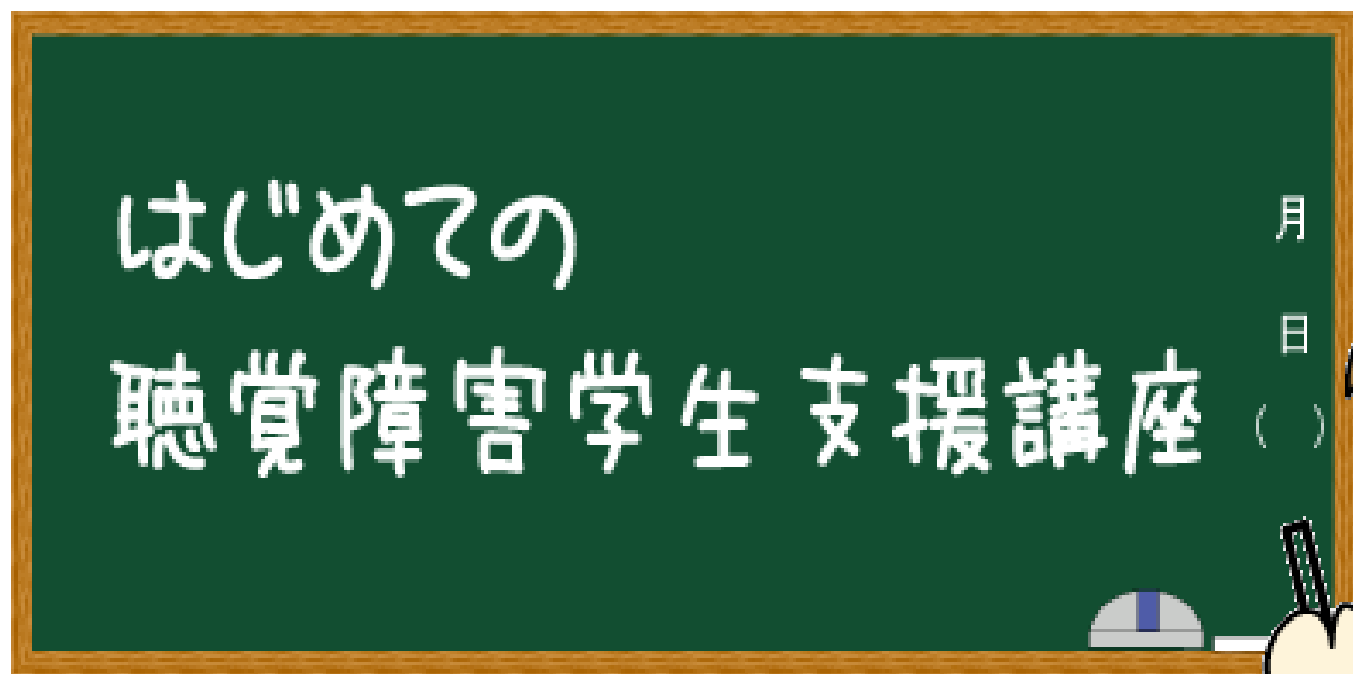


PEPNet-Japan TipSheets



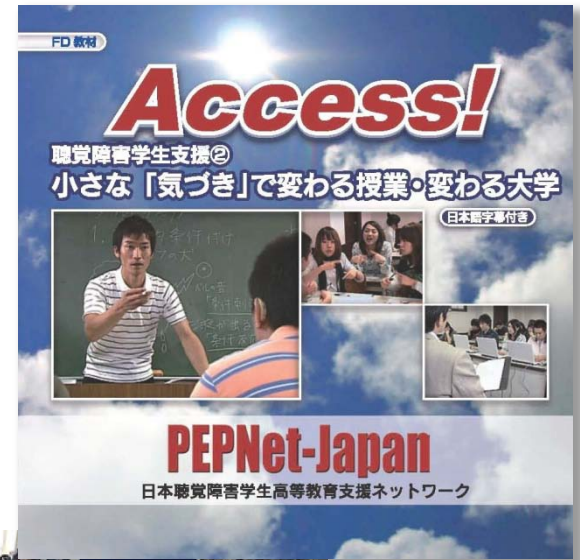
● <http://www.pepnet-j.org>

Student service for the first step



On Line Training Course

Other materials



NTUT Outreach program

T-TAC

- *Technical Assistance*
- *communication support*
- *Material Development*
- ***Staff and Faculty Training***
- *Research*
- *Network Development*



4th Symposium on Student Service for Deaf or Hard of Hearing



Training seminars for service coordinators



NTUT Outreach program

T-TAC

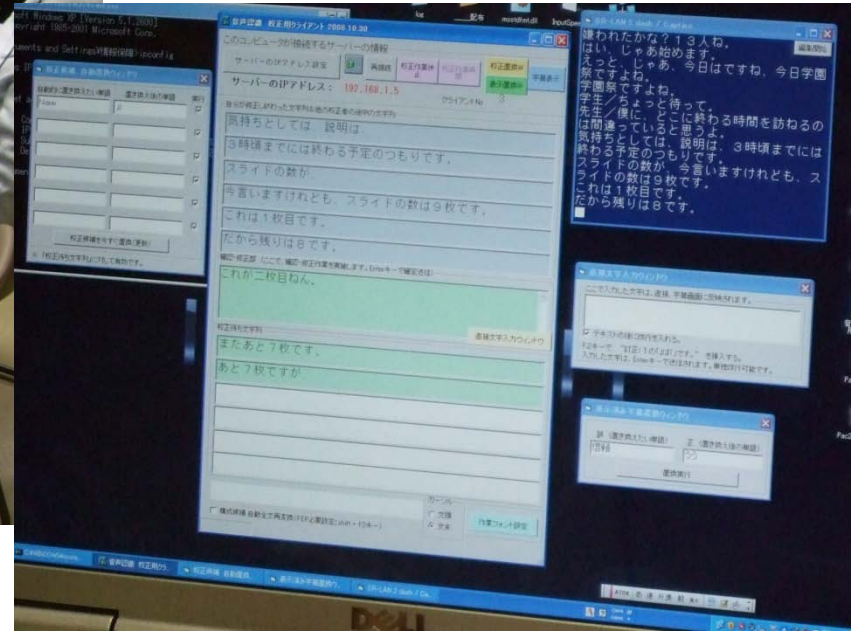
- *Technical Assistance*
- *communication support*
- *Material Development*
- *Staff and Faculty Training*
- **Research**
- *Network Development*



Investigations on the support system in the advanced country



System Development



Voice Recognition System, Remote Captioning

NTUT Outreach program

T-TAC

- *Technical Assistance*
- *communication support*
- *Material Development*
- *Staff and Faculty Training*
- *Research*
- ***Network Development***



Network Development

17 Partner Institutions

260 members in listserve

Presidents Conference Oct 20th, 2009



PEPNet-Japan
National University Corporation
Tsukuba University of Technology

Special Thanks to PEN-International



T-TAC

Sapporo Gakuin University
Gunma University
Niigata University of Education
Tsukuba University of Technology
International Institute of Multimedia Education
University of Welfare
Education
Fukuoka University of Education
Ehime University